

MT1 Physics 1C(1), F16

Full Name (Printed) _____

Name Withheld
UPE-Certified Name Withholder™

Full Name (Signature) _____

Signature Withheld
UPE-Certified Signature Withholder

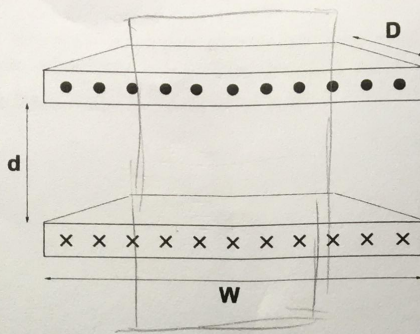
Student ID Number _____

ID Withheld
UPE-Certified ID Withholder™

Seat Number 106

Problem	Grade
1	02 / 30
2	28 / 30
3	22 / 30
Total	52 / 90

- Do not peek at the exam until you are told to begin. You will have approximately 50 minutes to complete the exam.
- Don't spend too much time on any one problem. Solve 'easy' problems first. Go for partial credit!
- **HINT:** Focus on the concepts involved in the problem, the tools to be used, and the set-up. If you get these right, all that's left is algebra.
- **Have Fun!**



1) Two thin, parallel, conducting sheets of dimension $D \times W$ are separated by a distance d as shown ($D \gg W \gg d$). The sheets each carry a linear current density K , one into the plane of the page, one out, as shown.

- 1a) (15 points) Use Faraday's law to calculate the self-inductance of the arrangement.

$$\mathcal{E}_i = -\frac{d\Phi_B}{dt} = -\frac{d}{dt}(BA) \quad +1 \quad I = \int K \cdot dA$$

$$L = \left| \frac{\mathcal{E}_i}{\frac{dI}{dt}} \right| = -\frac{\mu_0}{D} \frac{dI}{dt} d \cdot W$$

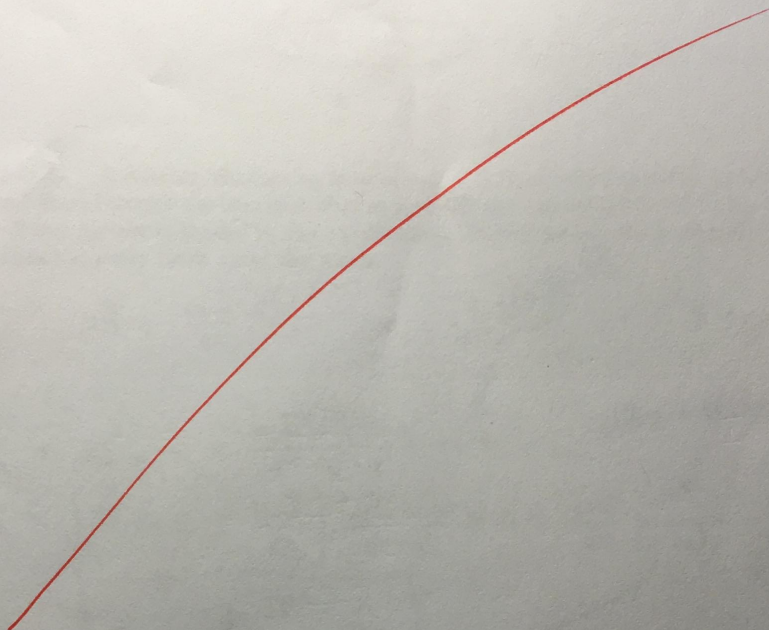
$$L = \frac{\mu_0 d}{D}$$

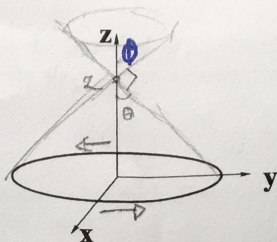
Gross.

- 1b) (10 pts) Verify your answer to the first part using energy considerations.

$$U = \frac{1}{2} LI^2 \quad +1$$

- 1c) (5 pts) Define \hat{L} as the inductance per unit length (measured along the current) and \hat{C} as the capacitance per unit length. Calculate $\frac{1}{\sqrt{\hat{L}\hat{C}}}$. This quantity plays an important role in the practical evaluation of transmission lines. Care to guess what it is?





- 9/10
- 2a) (10 points) A circular, conducting loop of radius R lies in the x,y -plane, centered on the origin. A current I flows through the loop such that at $x = +R$, the current is headed in the $+\hat{y}$ direction, and at $x = -R$ the current is headed in the $-\hat{y}$ direction. Derive the resultant magnetic field (magnitude and direction) at every point along the z -axis.

B-S:
$$d\vec{B} = \frac{\mu_0 I}{4\pi} \frac{d\vec{l} \times \hat{r}}{r^2}$$

$\sin \theta = \frac{R}{\sqrt{R^2 + z^2}}$

$$\sin \theta = \frac{R}{\sqrt{R^2 + z^2}}$$

$$\vec{B} = B_z \hat{z}$$

$$dB_z = dB \sin \theta = \frac{\mu_0 I}{4\pi} \frac{|d\vec{l}| |\hat{r}| \sin 90^\circ}{R^2 + z^2} \sin \theta$$

$$dB_z = dB \cos \phi = dB \sin \theta$$

$$B_z = \int dB \sin \theta = \frac{\mu_0 I}{4\pi} \int \frac{|d\vec{l}| |\hat{r}| \sin 90^\circ}{R^2 + z^2} \sin \theta = \frac{\mu_0 I}{4\pi} \frac{2\pi R^2}{\sqrt{R^2 + z^2}} = \frac{\mu_0 I R^2}{2\sqrt{R^2 + z^2}}$$

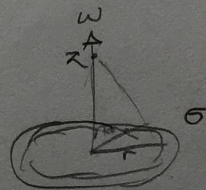
So
$$\vec{B} = \frac{\mu_0 I R^2}{2\sqrt{R^2 + z^2}} \hat{z}$$

- 10/10
- 2b) (10 points) Let's replace the loop with an infinitesimally-thin, uniform ring of electric charge that extends from r to $r + dr$. If the surface charge-density on the ring is given by σ and the ring rotates about the z -axis with a constant angular velocity ω (recall, the direction of ω is obtained by using the right-hand rule with the physical motion of points on the ring) find the magnitude and direction of the (infinitesimal) magnetic field produced at every point along the z -axis.

$$d\vec{B} = \frac{\mu_0 I}{4\pi} \frac{d\vec{l} \times \hat{r}}{r^2}$$

$$\vec{B} = B_z \hat{z}$$

$$dB_z = dB \sin \theta = \frac{\mu_0 I}{4\pi} \frac{|d\vec{l}| |\hat{r}| \sin 90^\circ}{r^2 + z^2} \sin \theta$$



$$B_z = \int dB \sin \theta = \frac{\mu_0 (\sigma \omega r)}{4\pi (r^2 + z^2)} \left(\frac{r}{\sqrt{r^2 + z^2}} \right) dq = \sigma dA$$

$$= \sigma 2\pi r dr$$

$$= \frac{\mu_0 \sigma \omega r^3}{2\sqrt{r^2 + z^2}} dr$$

$$dI = \frac{dq}{T} = \frac{\sigma 2\pi r dr}{2\pi/\omega} = \sigma \omega r dr$$

$$d\vec{B} = \frac{\mu_0 \sigma \omega r^3}{2\sqrt{r^2 + z^2}} dr \hat{z}$$

$$dB = \frac{\mu_0}{4\pi} \frac{R^2 (2\pi)}{(R^2 + z^2)^{3/2}} dI$$

Infinitesimal magnetic field.

- 2c) (10 points) Now lets replace the thin ring of part b with a washer that extends from $r = a$ to $r = b$. Charge is distributed over the washer with a surface charge density

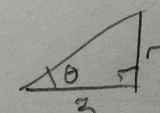
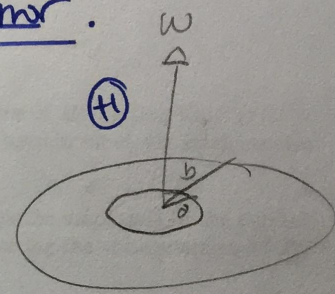
9/10

$$\sigma(r) = \frac{qab}{2\pi(b-a)} \frac{1}{r^3}$$

and it rotates with a constant angular velocity $\vec{\omega}$. Find the magnitude and direction of the magnetic field produced at every point on the z-axis.

$$\begin{aligned} \textcircled{+} \vec{B} &= \int_a^b d\vec{B} \\ &= \int_a^b \frac{\mu_0 \sigma \omega r^3}{2\sqrt{r^2+z^2}} dr \hat{z} \\ &= \frac{\mu_0 \omega z}{2} \int_a^b \frac{\frac{qab}{2\pi(b-a)} \frac{1}{r^3} r^3}{\sqrt{r^2+z^2}} dr \\ &= \frac{\mu_0 \omega z}{2} \frac{qab}{4\pi(b-a)} \int_a^b \frac{dr}{\sqrt{r^2+z^2}} \\ &= \frac{\mu_0 \omega}{2} \frac{qab}{4\pi(b-a)} \hat{z} \int_{r=a}^b \frac{z \sec^2 \theta d\theta}{\sqrt{z^2(1+\tan^2 \theta)}} \\ &= \frac{\mu_0 \omega}{2} \frac{qab}{4\pi(b-a)} \hat{z} \ln \left| \frac{\sqrt{r^2+z^2}+r}{z} \right|_a^b \\ &= \frac{\mu_0 \omega}{2} \frac{qab}{4\pi(b-a)} \ln \left| \frac{\sqrt{b^2+z^2}+b}{\sqrt{a^2+z^2}+a} \right| \hat{z} \end{aligned}$$

propagate error.

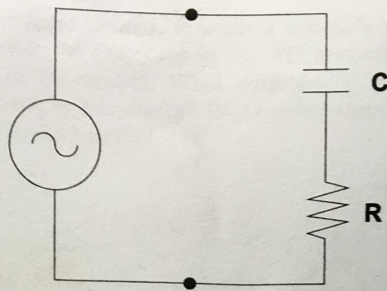


$$\begin{aligned} \tan \theta &= \frac{r}{z} \\ \sec \theta &= \frac{\sqrt{r^2+z^2}}{z} \end{aligned}$$

Let $r = z \tan \theta$
 $dr = \frac{z}{\cos^2 \theta} d\theta$

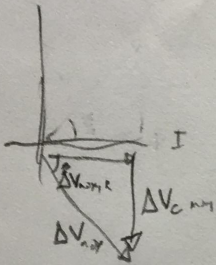
$$\begin{aligned} &\int_a^b \frac{dr}{\sqrt{r^2+z^2}} \\ &= \int_{r=a}^b \frac{z \sec^2 \theta d\theta}{\sqrt{z^2(1+\tan^2 \theta)}} \\ &= \int_{r=a}^b \frac{z \sec^2 \theta d\theta}{z \sec \theta} \\ &= \int_{r=a}^b \sec \theta d\theta \\ &= \ln \left| \sec \theta + \tan \theta \right|_{r=a}^b \\ &= \ln \left| \frac{\sqrt{r^2+z^2}+r}{z} \right|_{r=a}^b \end{aligned}$$

$$\vec{B}(z) = \frac{\mu_0 \omega qab}{8\pi(b-a)} \ln \left| \frac{\sqrt{b^2+z^2}+b}{\sqrt{a^2+z^2}+a} \right| \hat{z} \quad \textcircled{+}$$



3) An capacitor (C) and a resistor (R) are connected in series across a source of alternating EMF ($\xi(t) = \xi_{\max} \cos(\omega t)$). You may do the following calculations in complex space, but keep in mind, the final answers must all be real.

- 3a) (10 points) What is the impedance of RC combination? What is the amplitude of the current that passes through it? Does the current through this impedance lead or lag the voltage across it? By how much?



$$\tilde{Z} = R + i\left(\omega L - \frac{1}{\omega C}\right)$$

$$\text{so } Z = \sqrt{R^2 + \left(\frac{1}{\omega C}\right)^2}$$

$$I_{\max} = \frac{\xi_{\max}}{Z} = \frac{\xi_{\max}}{\sqrt{R^2 + \frac{1}{\omega C}}}$$

$$\tan\left(\frac{\phi}{2}\right) = -\frac{R}{\frac{1}{\omega C}}$$

The current leads the voltage by $\tan^{-1}(-R\omega C)$,

- 3b) (10 points) What is the voltage amplitude across the resistor? What is the voltage amplitude across the capacitor? Will the sum of these voltage amplitudes equal the voltage amplitude of the source? Explain.

$$\xi(t) = \xi_{\max} \cos(\omega t)$$

$$\Delta V_{\max, R} = \xi_{\max} = I_{\max} R = \xi_{\max} \frac{R}{\sqrt{R^2 + \frac{1}{\omega C}}}$$

$$\Delta V_{\max, C} = I_{\max} X_C = \xi_{\max} \frac{\frac{1}{\omega C}}{\sqrt{R^2 + \frac{1}{\omega C}}}$$

No, they will not sum to be voltage amplitude of the source because they are out of phase.

- 3c) (10 points) For a lot of good reasons, it is often desirable to present the source with a purely resistive load. We can tune-out the reactance in the RC network by adding an inductor in parallel with it (across the two dots in the circuit). What value should the inductor have? What will be the value of the new impedance seen by the source? Will current through this new LRC combination lead or lag the voltage across it? By how much?

$$Z = \frac{1}{Z_L} + \frac{1}{Z_{RC}}$$

$$= \frac{1}{\omega L} + \frac{1}{R + \frac{1}{\omega C}}$$

