

19F-PHYSICS1C-4 Midterm

RI XIN WANG

TOTAL POINTS

90 / 100

QUESTION 1

Problem 1 15 pts

1.1 Part a 5 / 5

1.2 Part b 5 / 5

1.3 Part c 5 / 5

QUESTION 2

Problem 2 20 pts

2.1 Part a 10 / 10

2.2 Part b 10 / 10

QUESTION 3

Problem 3 20 pts

3.1 Part a 10 / 10

3.2 Part b 10 / 10

QUESTION 4

Problem 4 15 pts

4.1 Part a 5 / 5

4.2 Part b 10 / 10

QUESTION 5

Problem 5 15 pts

5.1 Part a 10 / 10

5.2 Part b 5 / 5

QUESTION 6

6 Problem 6 5 / 15

Name (clearly please!) Ri Xin Wang
UID: 305088388

MIDTERM
Version C
Physics 1C, Prof. David Saltzberg
November 7, 2019

Time: 90 minutes. Closed Notes. Closed Book. One 3"x5" sheet of notes allowed. Calculators (even graphing) are allowed. Show your work. *Please write your name on every page just in case.*

If a problem is confusing or ambiguous, notify the professor. Clarifications will be written on the blackboard. Check the board.

Problem	Points
1	/15
2	/20
3	/20
4	/15
5	/15
6	/15
-----	-----
TOTAL	/100

Ri Xin Wang 305086388

1) Short answers:

a) (5 pts) In class we performed a demonstration where a student pedaled a bicycle connected to a generator to power light bulbs in parallel. The reason he had to pedal harder as more bulbs were added was:

- 1) due to increasing back-EMF (or "counter-EMF") of the generator
- 2) due to increasing back-torque (or "counter-torque") of the generator
- 3) due to the presence of the Maxwell term $+\mu_0\epsilon_0(d\Phi_E/dt)$ in the Ampère-Maxwell Law
- 4) due to the presence of the conduction current term $\mu_0 I_C$ in the Ampère-Maxwell Law
- 5) because aluminum is diamagnetic and like-poles (e.g., N and N) repel.

2

b) (5 pts) A block of material is placed near a bar magnet and is weakly attracted to it. When the bar magnet is removed, the block of material is found not to be magnetized. This is an example of:

- 1) diamagnetism
- 2) ferromagnetism
- 3) paramagnetism
- 4) animal magnetism
- 5) a magnetic monopole

3

c) (5 pts) A magnetic dipole $\vec{\mu}$ is placed in a uniform magnetic field, \vec{B} . Draw a configuration where the magnitude of the torque on the dipole is maximal.

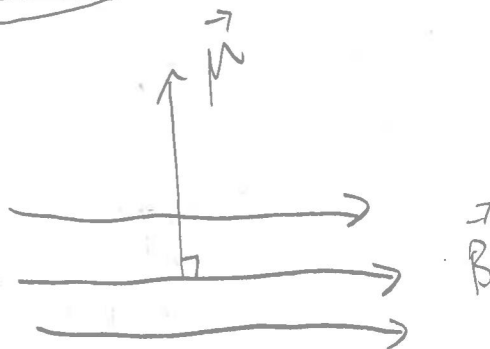
$$\vec{\tau} = \vec{\mu} \times \vec{B}$$

$$|\vec{\tau}| = \mu B \sin \phi$$

$$\text{when } \phi = \frac{\pi}{2}, \sin \phi = 1$$

$$|\vec{\tau}| = \mu B$$

∴ Magnitude of Torque is maximal when $\vec{\mu}$ is \perp to \vec{B}

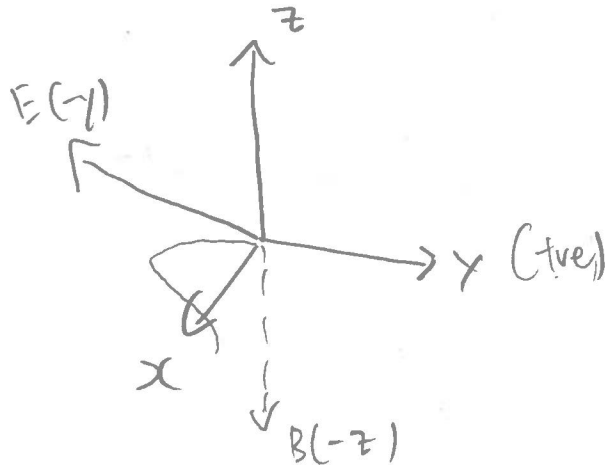


//

Ri Xin Wang 305088388

2) A sinusoidal electromagnetic wave with wavelength 2.0 m travels in vacuum in the $+x$ direction with its electric field having an amplitude of 300 V/m that points along the y -axis. At $x=0, t=0$ the electric field is zero and decreasing in value (i.e., becoming more negative).

a) (10 pts) Write the equation for the magnetic field in terms of its amplitude, wavenumber k , and angular frequency ω . [Hint: your answer should be a vector. It should have numerical values with units for k , ω , and the field amplitude.]



$$E_{\text{max}} = 300 \text{ V/m}$$

$$E_{\text{max}} = B_{\text{max}} \cdot c$$

$$\frac{E_{\text{max}}}{c} = B_{\text{max}}$$

$$B_{\text{max}} = \frac{300}{3 \times 10^8}$$

\vec{B} should be in $-\hat{k}$ direction by right hand rule $= 1 \times 10^{-6} \text{ T} \checkmark$

eqn of the wave:
 $-\sin(kx - \omega t)$

$$c = f \lambda$$

$$f = \frac{c}{\lambda}$$

$$= \frac{3 \times 10^8}{2}$$

$$= 1.5 \times 10^8 \text{ Hz}$$

$$\omega = 2\pi f$$

$$= 2\pi(1.5 \times 10^8)$$

$$= 9.42 \times 10^8 \text{ rad s}^{-1} \checkmark$$

$$k = \frac{2\pi}{\lambda}$$

$$= \frac{2\pi}{2} = \pi \text{ rad m}^{-1}$$

$$= 3.14 \text{ rad m}^{-1} \checkmark$$

$$\vec{B} = 1 \times 10^{-6} \text{ T} \sin((3.14 \text{ rad m}^{-1})x - (9.42 \times 10^8 \text{ rad s}^{-1})t) (-\hat{k}) \checkmark$$

R. Xin Wang 305088388

b) (10 pts) Suppose this wave is perfectly absorbed uniformly over an entire square-shaped sail with dimensions $2.0\text{m} \times 2.0\text{m}$. The Poynting vector of the wave is parallel to the area vector of the sail. What is the force on the sail in Newtons? [Hint: this one may need your calculator.]

$$A = 4\text{m}^2$$

$$\frac{S}{c} = \text{pressure (absorption)}$$

$$\text{pressure} = \frac{S}{c}$$

$$\text{Force} = \frac{S}{c} (A)$$

$$= \frac{1}{2\mu_0} E_{\text{max}} B_{\text{max}} \left(\frac{A}{c}\right)$$

$$\frac{S}{c} (A) = \text{force}$$

$$F = \frac{E_{\text{max}} B_{\text{max}} A}{2\mu_0 c}$$

$$S = \frac{1}{2\mu_0} E_{\text{max}} B_{\text{max}}$$

$$= \frac{E_{\text{max}} B_{\text{max}}}{2\mu_0}$$

$$\text{Force} = \frac{S}{c} (A) = \frac{E_{\text{max}} B_{\text{max}}}{2\mu_0 c} (A)$$

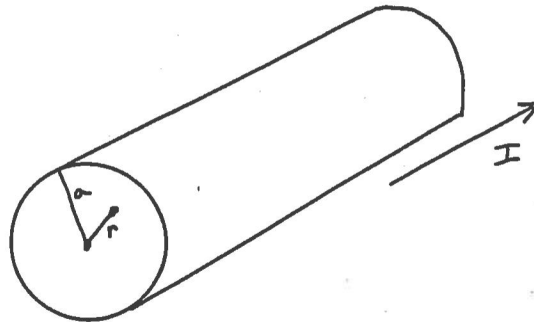
$$= \frac{(1 \times 10^{-6})(300)}{(4\pi \times 10^{-7})(2)(3 \times 10^8)} (4) \quad (4)$$

$$= 1.59 \times 10^{-6} \text{ N} //$$

Ri Xin Wang 305088388

3) A long cylindrical wire of radius, a , carries a current density $J(r)$ along its axis that is proportional to the cube of the radius, r , that is:

$$J(r) = J_0 \left(\frac{r}{a}\right)^3, r < a,$$
$$J(r) = 0, \text{ elsewhere}$$



$$\int_0^a J_0 \frac{r^3}{a^3} 2\pi r dr$$

2.4, 2.1

a) (10 pts) Suppose $a=5.0$ m and the total current carried in the wire is $I_0=3.14$ A. What is J_0 ?
[Answer is a numerical value with units]
[extra space on next page if needed]

$$dA = 2\pi r dr$$

$$dI_{\text{enclosed}} = J(r) 2\pi r dr$$

$$I_0 = \int_0^5 J_0 \left(\frac{r^3}{a^3}\right) (2\pi r) (dr)$$

$$= \int_0^5 J_0 \left(\frac{r^3}{125}\right) (2\pi r) (dr)$$

$$= \frac{2\pi J_0}{125} \int_0^5 r^4 (dr)$$

$$= \frac{2\pi J_0}{125} \left[\frac{r^5}{5} \right]_0^5$$

$$= \frac{2\pi J_0}{125} \left(\frac{5^5}{5} \right)$$

$$= 10\pi J_0$$

$$I_0 = 3.14 \text{ A}$$

$$J_0 = \frac{I_0}{10\pi}$$

$$= \frac{3.14}{10\pi}$$

$$= 0.1 \text{ A/m}^2$$

[extra space]

$$\frac{10r^3}{a^3} (2\pi r) (dr)$$

$$\int_0^2 \frac{20\pi r^4}{a^3} dr$$

$$\frac{20\pi}{a^3} \left[\frac{r^5}{5} \right]_0^2$$

$$\frac{20\pi}{a^3} \left(\frac{2^5}{5} \right) \times 4\pi \times 10^{-7}$$

~~20(2)~~

Ri Xin Wang 305088388

b) (10 pts) Suppose the current is changed so that $J_0 = 10 \text{ A/m}^2$. [Hint: this part does not depend on your answer for part a]. What is the value B at $r = 2.0 \text{ m}$? [This is a numerical value with units.]

$$J(r) = J_0 \left(\frac{r}{a}\right)^3$$

$$J(r) = 10 \left(\frac{r^3}{a^3}\right)$$



$$I_{\text{enclosed}} = \int_0^2 J(r) (2\pi r) (dr) = \int_0^2 \frac{10r^3}{a^3} (2\pi r) (dr)$$

$$\begin{aligned} \mu_0 I_{\text{enclosed}} &= \oint B dl \\ &= \int B dl \\ &= B (2\pi r) \end{aligned}$$

$$\frac{\mu_0 I_{\text{enclosed}}}{2\pi r} = B$$

$$B = \frac{(4\pi \times 10^{-7}) (1.024\pi)}{2(\pi)(2)}$$

$$= 10^{-7} (1.024\pi)$$

$$= 3.22 \times 10^{-7} \text{ T} //$$

$$= \frac{20\pi}{a^3} \int_0^2 r^4 (dr)$$

$$= \frac{20\pi}{a^3} \left[\frac{r^5}{5} \right]_0^2$$

$$= \frac{20\pi}{a^3} \left(\frac{32}{5} - 0 \right)$$

$$= \frac{20\pi(32)}{54}$$

$$= \frac{640}{54} \pi$$

$$= 1.024\pi$$

Ri Xin Wang 305088388

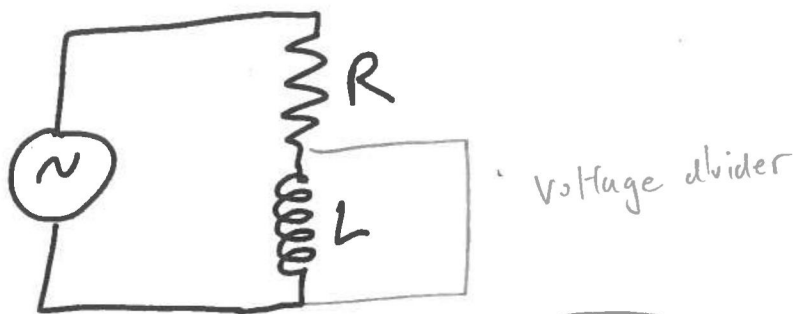
4) An AC wall socket in Europe provides a voltage that is sinusoidal in time with a frequency of 50 Hz and root-mean-square (R.M.S.) voltage of 240 V between its two conductors.

a) (5 pts) What is the amplitude of the voltage?

$$\frac{V}{\sqrt{2}} = V_{rms}$$

$$V = V_{rms} \sqrt{2} = 240 (\sqrt{2}) = 339 \text{ V}$$

b) (10 pts) Now you connect an inductor and resistor in series to this European AC wall socket, as shown below:



Where $R=62.8 \Omega$ and $L=100 \text{ mH}$. The current is at its maximum positive value at $t=0$. What is the RMS voltage across the inductor? [Hint: you may need your calculator a little.]
[extra space on next page]

$$Z = \sqrt{R^2 + (\omega L)^2}$$
$$= \sqrt{62.8^2 + (100\pi)^2 (100 \times 10^{-3})^2}$$
$$= 70.2197 \Omega$$

$$f = 50$$

$$2\pi f = \omega = 100\pi$$

By voltage divider

$$\frac{Z_L}{Z_{total}} (V_{rms}) = \frac{100\pi (100 \times 10^{-3})}{70.2197} (240)$$
$$= 107.4 \text{ V} //$$

[extra space]

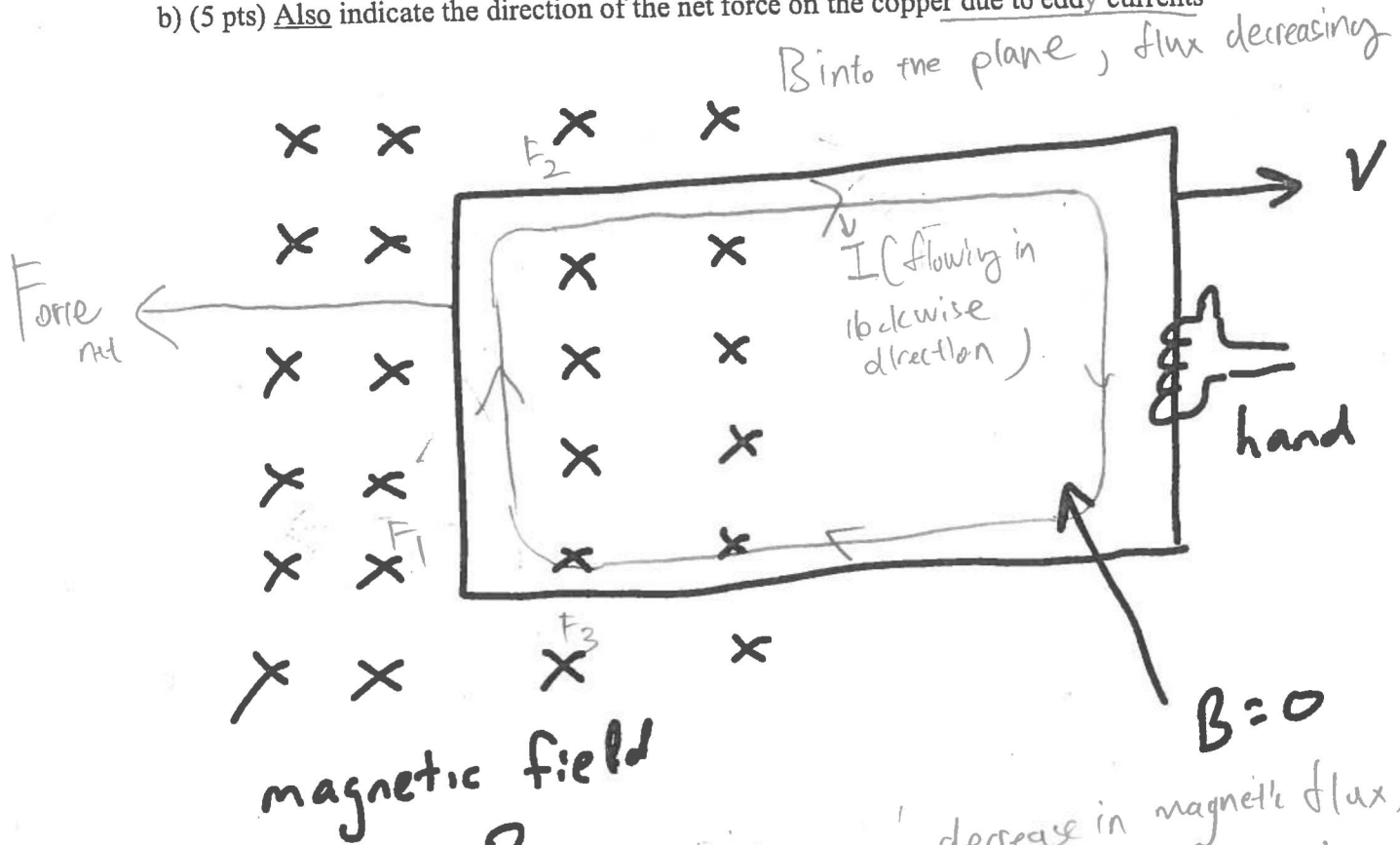
Ri Xin Wang

3050 88388

5) You are pulling a rectangular plate of copper out of a region with uniform magnetic field B with a constant speed v .

a) (10 pts) On the figure below draw one of the eddy current loops with non-zero current. Show the direction of current flow.

b) (5 pts) Also indicate the direction of the net force on the copper due to eddy currents



a) B directed into the plane, hand pulling causes decrease in magnetic flux, induced emf to prevent change in magnetic flux, current flowing in clockwise direction as shown in the diagram.

b) There are 3 forces being generated due to the eddy currents.

F_1 = direction to the left (By right hand rule)

F_2 = direction up

F_3 = direction down

$$F_{net} = F_1 + (F_2 + F_3)$$

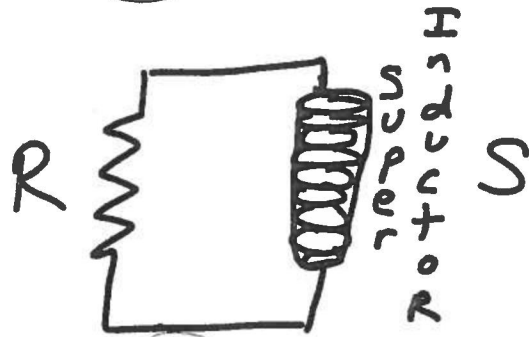
$F_2 + F_3 = 0$ (They are in oppost directions and will cancel out)

$$F_{net} = F_1$$

• direction of F_{net} (to the left) (diagram)

Ri Xin Wang 305088388

6) (15 pts) Scientists at a top-secret government laboratory recently invented a *super-inductor*. The voltage drop across a super-inductor is given by $V(t) = S \frac{d^3 I}{dt^3}$, where S is a constant known as the *super-inductance*, and $I(t)$ and $V(t)$ are the current and voltage. In the circuit below, a super-inductor with super-inductance $S=800,000$ (in the appropriate S.I. units) is in series with a resistor with resistance $R=100 \Omega$ and the initial current at time $t=0$ is I_0 .



At what time does the current become $(1/e)I_0$?
[extra page follows if needed]

$$V(t) = S \left(\frac{d^3 I}{dt^3} \right)$$
$$= S \frac{d^3 I}{dt^3}$$

$$S \left(\frac{d^3 I}{dt^3} \right) + IR = 0$$

Guess solution:

$$I(t) = I_0 e^{-t/\tau}$$
$$= I_0 e^{-\frac{Rt}{L}}$$

When $I = \frac{1}{e} I_0$

$$\frac{I_0}{e} = I_0 e^{-\frac{Rt}{L}}$$
$$= \frac{I_0}{e^{\frac{Rt}{L}}}$$

$$1 = \frac{Rt}{L}$$
$$= \frac{100}{800000} t$$
$$= \frac{100}{800000} t$$

$$\frac{800000}{100} = t$$

$$t = 8000 \text{ s} //$$

8000s after initial
time at $t=0$ //

[extra page]